

1.

"

" 1995

5 9

16

.

2.

(1)

:

(2)

: 1,959

(3)

:

(4)

:

(5)

: 1995 5 9 16

(6)

:

(7)

: 『 』 ' ' SPSS PC

.

,

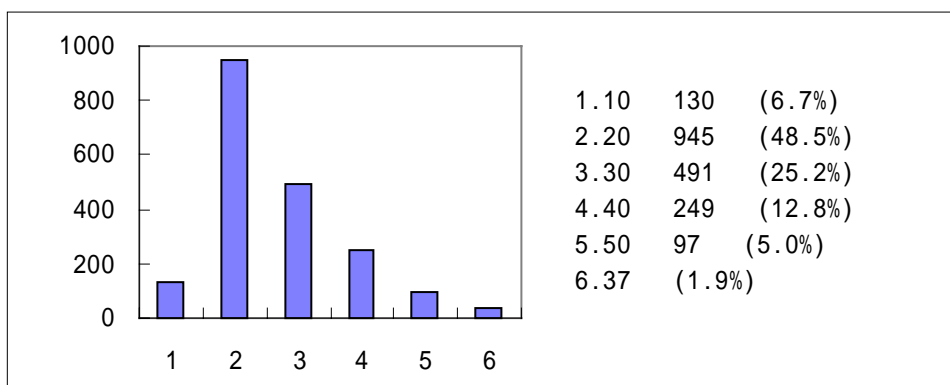
.

/ / / / / / / / /

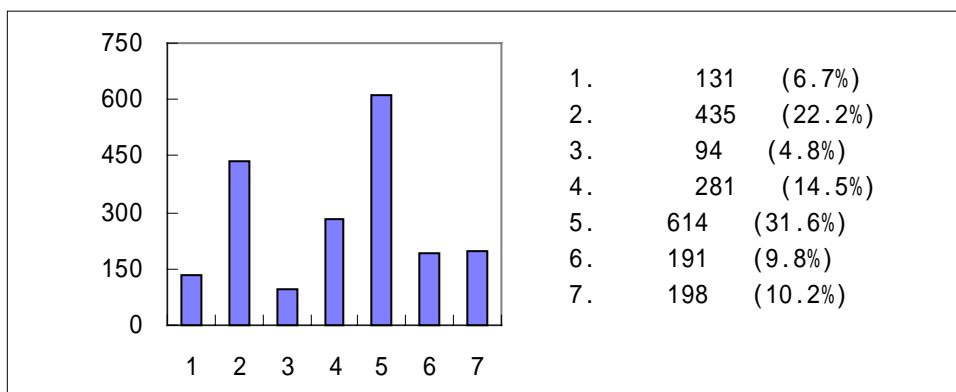
<

>

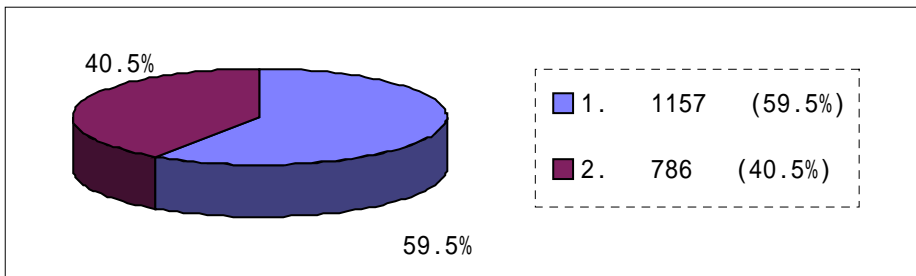
1.



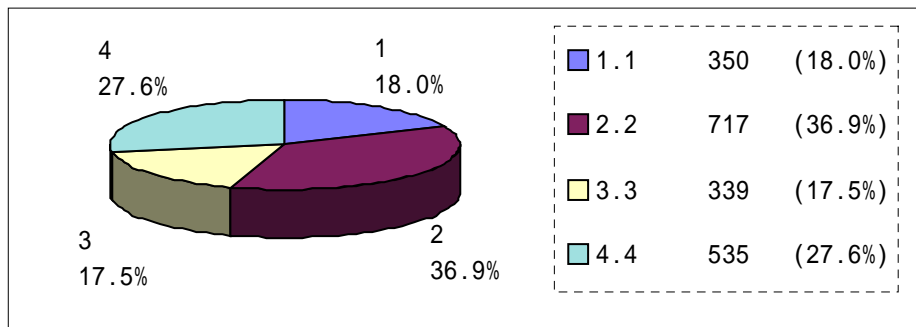
2.



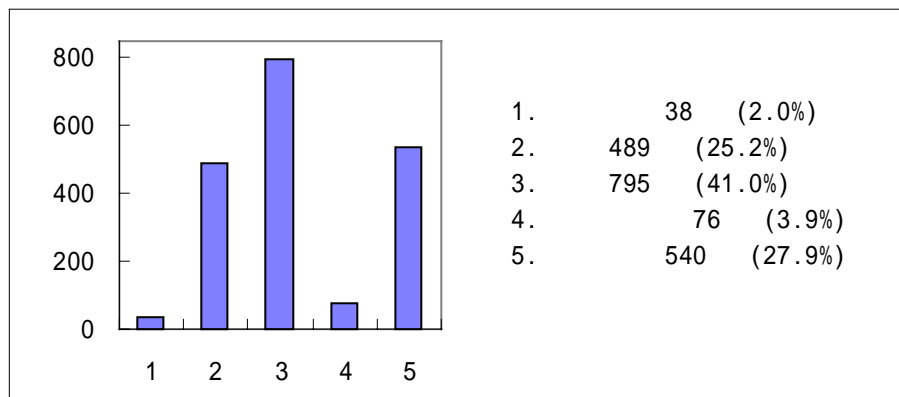
3.



4.



5.

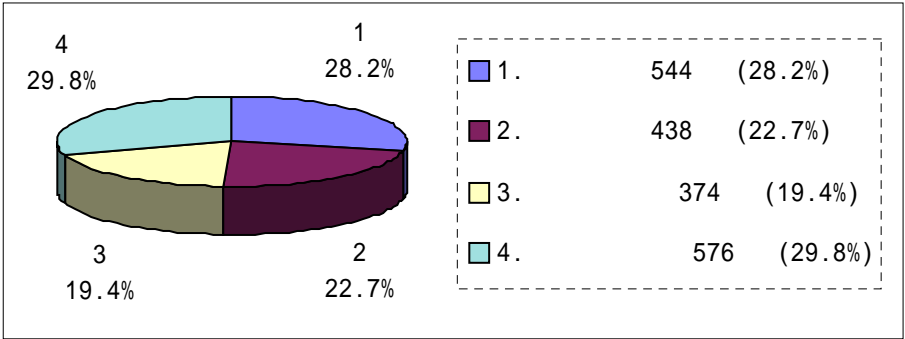


1) '20 '(48.5%) '30 '(25.2%)가 73.7% 가
가 2,30 가

2) '2 '(36.9%) 가

A.

1. 가 ?



가 '(29.8%) '(28.2%) ,

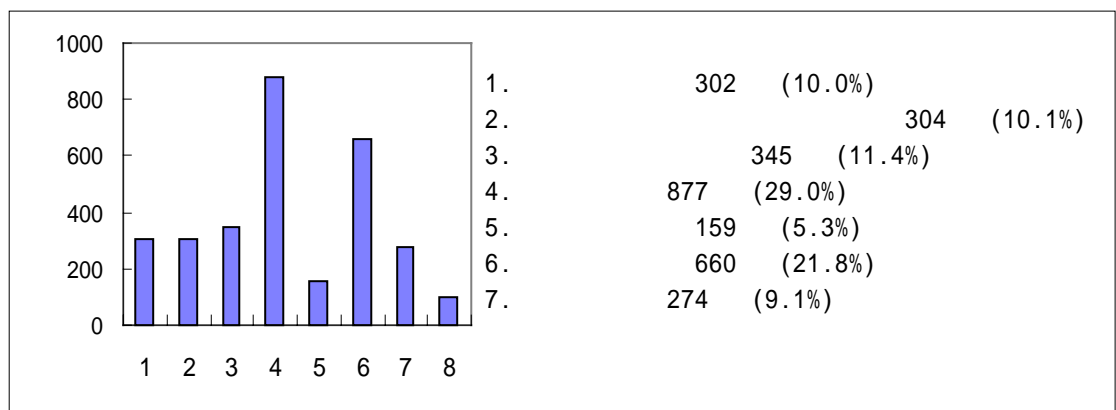
' (22.7%) , 10 가
' (33.8%) , ' (30.0%) 60
' (29.7%) ' (27.0%) ,

1.

10	19.2%	33.8%	16.9%	30.0%
20	27.1%	23.9%	20.5%	28.4%
30	27.7%	21.3%	19.9%	31.1%
40	38.0%	16.9%	12.4%	32.6%
50	27.7%	19.1%	20.2%	33.0%
60	27.0%	16.2%	27.0%	29.7%
	23.5%	23.6%	20.7%	32.3%
	34.7%	21.5%	17.2%	26.2%

2. 가

? 가 .



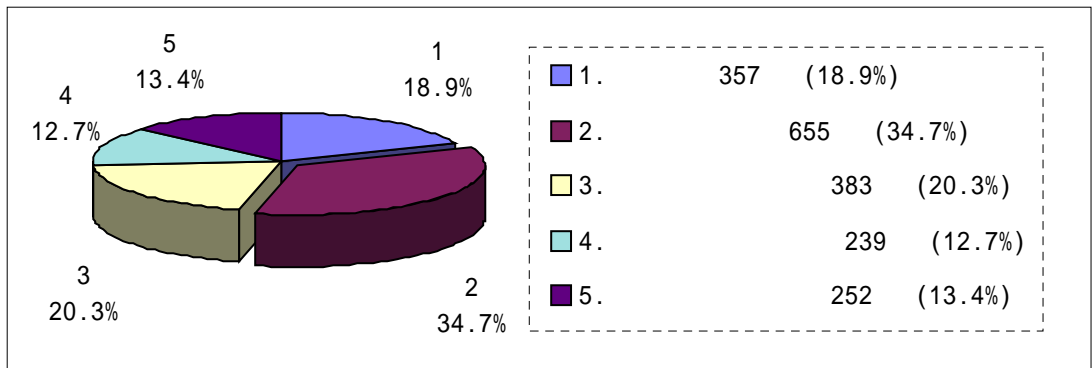
1) 가 (29.0%)
(21.8%) .

2) ' (5.3%) ' (9.1%)
가 .

2.

10	15.4%	11.5%	27.7%	43.8%	9.2%	30.8%	3.8%	6.2%
20	16.9%	14.4%	20.6%	47.2%	8.4%	37.3%	8.9%	5.9%
30	14.3%	19.9%	14.1%	43.3%	8.3%	34.0%	20.3%	3.7%
40	13.8%	17.1%	13.8%	44.7%	8.1%	30.5%	25.2%	3.7%
50	14.0%	10.8%	14.0%	45.2%	5.4%	31.2%	23.7%	8.6%
60	22.2%	19.4%	16.7%	55.6%	11.1%	22.2%	11.1%	5.6%
	14.9%	16.3%	15.3%	45.9%	9.1%	33.3%	16.3%	5.4%
	17.1%	15.3%	22.0%	45.7%	7.1%	36.2%	11.3%	5.0%

3. 가 ?



1) ' (34.7%) 가
' (20.3%) .

2) 가
50 ' (24.4%) , 가
' .

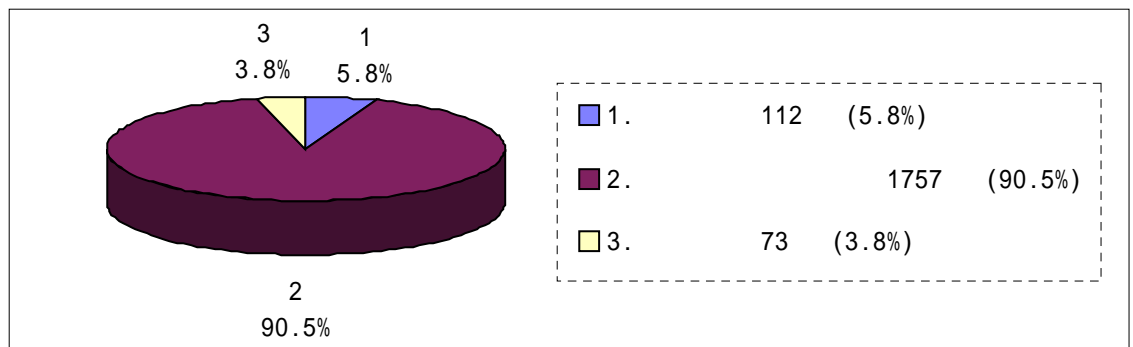
3) ' 가 43.2%
' .

3.

10	19.2%	36.2%	12.3%	11.5%	20.8%
20	17.0%	40.1%	15.8%	11.9%	15.3%
30	19.9%	30.3%	28.4%	10.6%	10.8%
40	22.4%	28.7%	24.9%	15.6%	8.4%
50	23.3%	20.2%	23.3%	24.4%	8.9%
60	13.9%	30.6%	25.0%	16.7%	13.9%
	19.7%	29.1%	22.1%	14.7%	14.5%
	17.6%	43.2%	18.0%	9.7%	11.4%

1	17.8%	35.6%	22.4%	13.6%	10.6%
2	20.4%	31.3%	19.7%	12.8%	15.9%
3	22.5%	30.9%	19.8%	12.9%	13.8%
4	15.3%	41.2%	20.7%	11.4%	11.4%

4. 가 ?



1) ' (90.5%)가 가

2) '가 가

3 94.4%

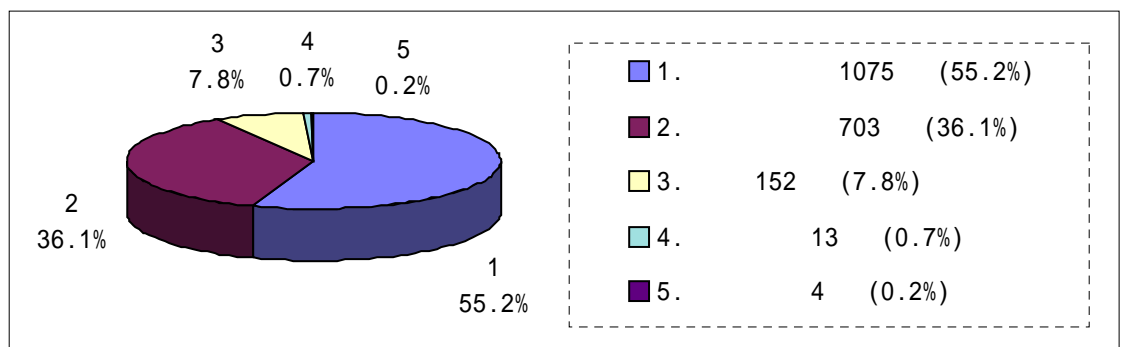
4.

	7.2%	90.8%	2.0%

1	5.3%	91.0%	3.7%
2	2.7%	94.4%	3.0%
3	6.8%	88.1%	5.1%
4			
	5.4%	86.5%	8.1%
	6.6%	87.8%	5.6%
	5.3%	91.6%	3.0%
	14.7%	82.7%	2.7%
	4.3%	93.1%	2.6%

5.

?



1)

91.3%

55.2%

2)

' (70.2%)

' (24.4%)가 94.6%

가

가

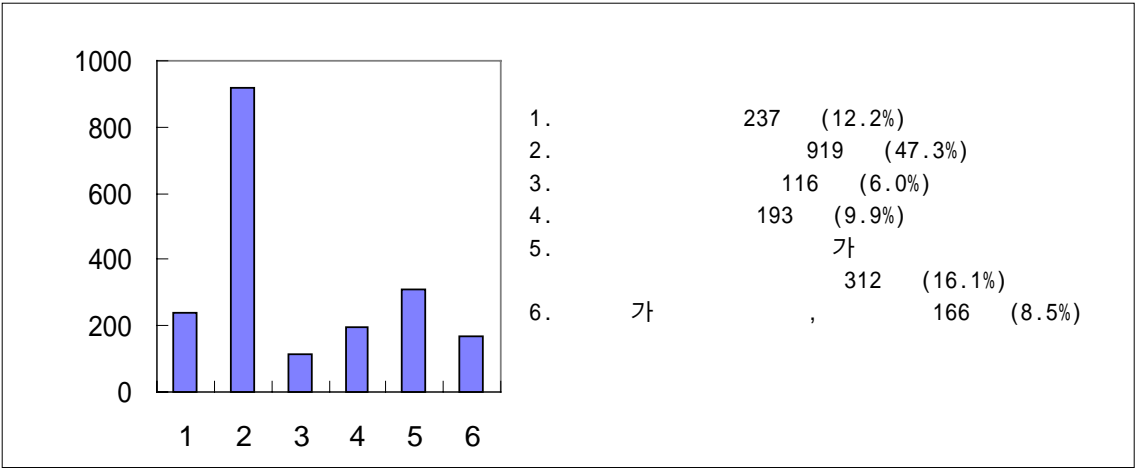
5.

10	39.2%	41.5%	18.5%	0.8%	0
20	51.3%	41.2%	6.7%	0.6%	0.2%
30	63.6%	28.4%	7.4%	0.2%	0.4%
40	60.4%	31.8%	6.9%	0.8%	0
50	57.4%	33.0%	7.4%	2.1%	0
60	64.9%	21.6%	10.8%	2.7%	0
	70.2%	24.4%	4.6%	0.8%	0
	60.9%	32.2%	6.3%	0.2%	0.5%
	60.2%	25.8%	12.9%	1.1%	0
	60.5%	33.0%	5.4%	1.1%	0
	47.8%	42.6%	8.6%	0.7%	0.3%
	47.9%	40.0%	11.1%	1.1%	0
	53.3%	37.6%	8.6%	0.5%	0

6.

가

?



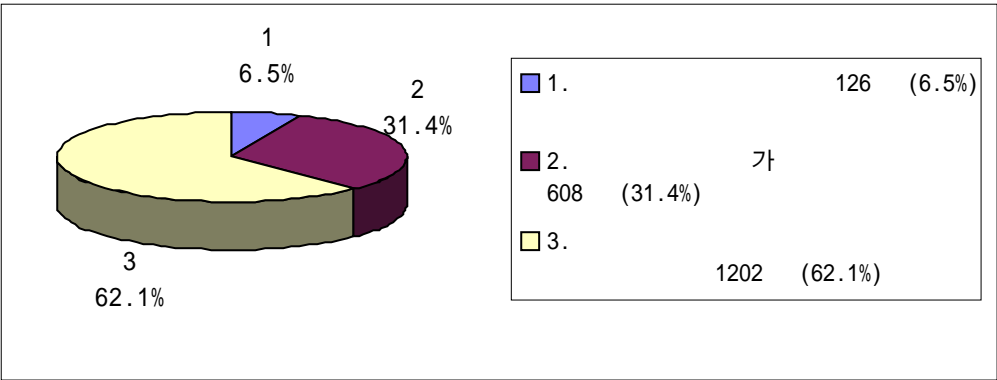
가 ' (47.3%)가
가 ' (16.1%)가
.

6.

			1	2	3	4
	13.9%	9.8%	11.3%	14.2%	14.7%	8.5%
,	48.5%	45.5%	51.4%	44.9%	44.8%	49.2%
	5.2%	7.0%	7.2%	4.5%	6.8%	6.4%
	9.6%	10.4%	6.9%	11.6%	12.1%	8.3%
가	14.2%	18.8%	15.3%	16.9%	13.0%	17.5%
가 ,	8.7%	8.4%	7.8%	7.9%	8.6%	10.0%

	100%	100%	100%	100%	100%	100%
--	------	------	------	------	------	------

7. 가 .
. ?



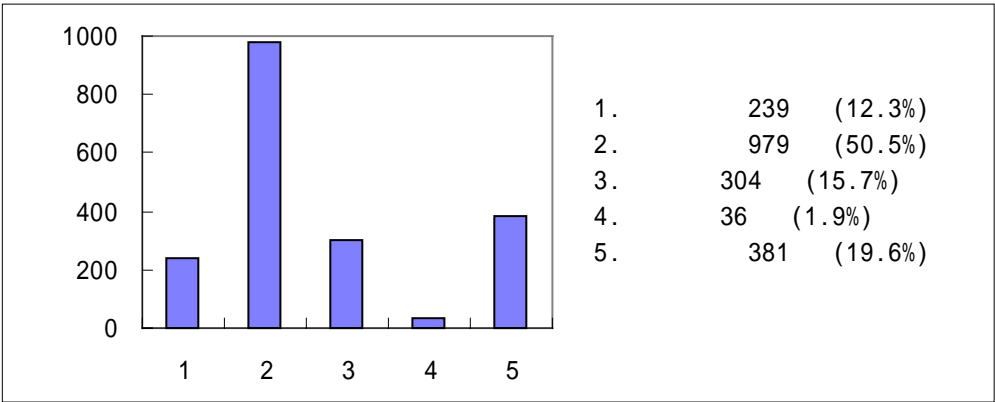
- 1) 가 62.1%가 ' .
- 2) .
- 3) , ' , 6.5% .
가 .

7.

--	--	--	--

10	8.5%	25.6%	65.9%
20	4.6%	32.4%	63.0%
30	5.8%	30.9%	63.3%
40	7.3%	35.4%	57.3%
50	17.0%	21.3%	61.7%
60	21.6%	32.4%	45.9%
	6.0%	36.7%	57.3%
	6.9%	23.5%	69.5%

8. 1 가 ?



- 1) 50.5%가 ' , ' .
- 2) 10 58.1%, 40 39.1%, 60 28.6% ' , ' .
- 3) ' , ' 10 11.1%, 50 37.2% .
- 4) ' , ' 43.2%가, 61.6%가

가

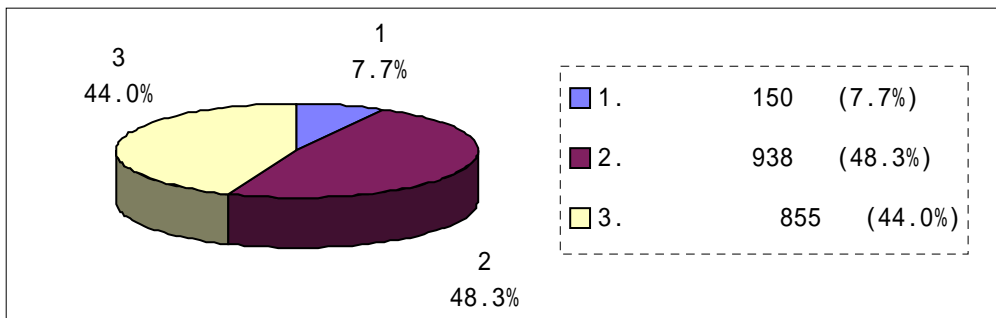
8.

10	9.3%	58.1%	16.3%	4.7%	11.6%
20	11.0%	57.0%	14.1%	1.2%	16.8%
30	17.1%	46.7%	17.7%	1.2%	17.3%
40	11.7%	39.1%	15.3%	2.8%	31.0%
50	7.4%	35.1%	14.9%	5.3%	37.2%
60	11.4%	28.6%	25.7%	2.9%	31.4%
	13.7%	43.2%	19.0%	2.0%	22.2%
	10.4%	61.6%	10.5%	1.7%	15.9%

B.

1.

?



1) 48.3%가 ' , ' 가
44.0%

2) ' , 가

(72.1%), 가 20.9%

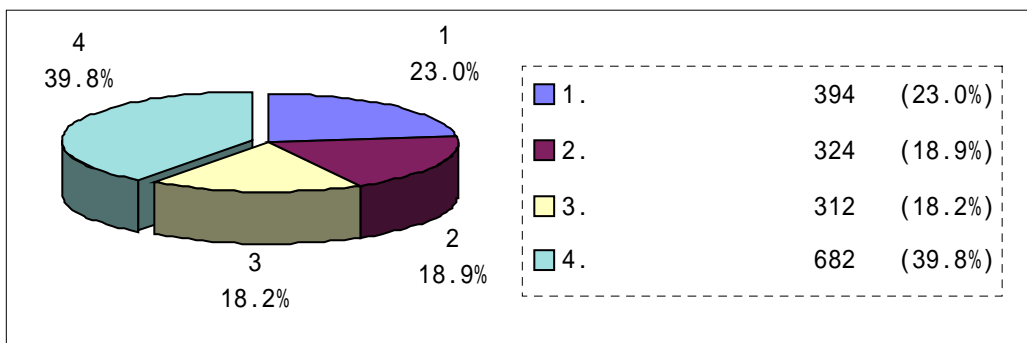
3) 가 (53.9%)

9.

	7.0%	72.1%	20.9%
	5.1%	54.0%	40.9%
	9.7%	58.1%	32.3%
	9.0%	50.0%	41.0%
	8.0%	42.6%	49.4%
	12.2%	33.3%	54.5%
	5.1%	46.9%	48.0%
	16.2%	27.0%	56.8%
	9.1%	46.5%	44.4%
	6.0%	53.9%	40.1%
	14.5%	48.7%	36.8%
	7.1%	43.8%	49.2%

2.

?



1)

39.8%가 ' , 23.0%가 ' .

2)

10.

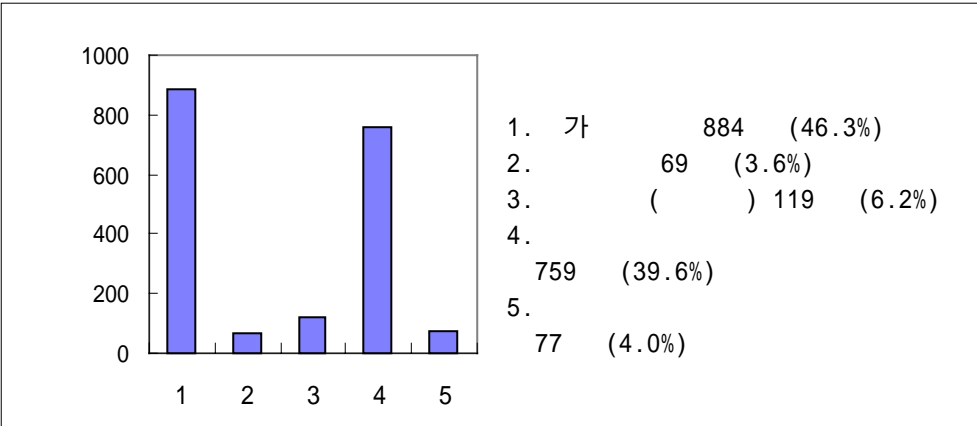
	25.4%	15.1%	26.2%	33.3%
	22.5%	18.3%	18.8%	40.5%
	30.6%	23.5%	27.1%	18.8%
	21.1%	25.4%	14.1%	39.5%
	23.3%	16.3%	19.5%	40.8%
	24.3%	18.9%	8.9%	47.9%
	20.3%	17.5%	18.1%	44.1%

3.

가

3 가 .

?



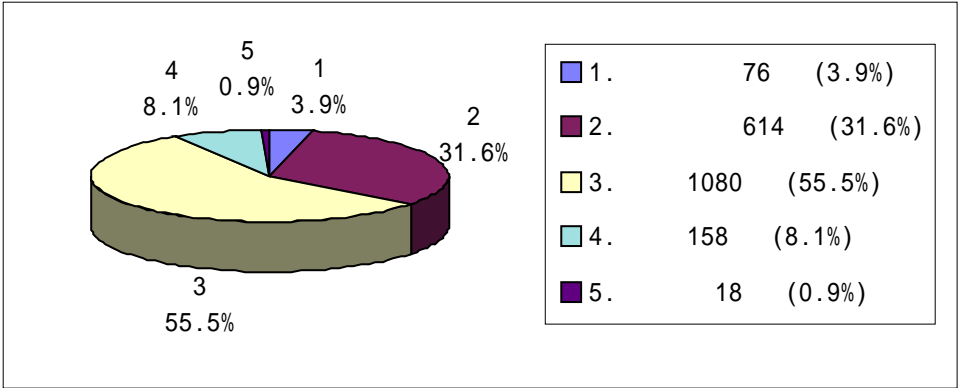
46.3%가 ' 가 , 가 ,
 39.6%
 (3.6%) ' (4.0%)
 . 가
 가가 .

11.

	가		()		
10	49.2%	3.2%	8.9%	35.5%	3.2%
20	47.1%	3.2%	6.5%	41.2%	1.9%
30	46.6%	2.9%	4.6%	43.3%	2.7%
40	44.8%	3.7%	5.8%	38.2%	7.5%
50	38.0%	6.5%	9.8%	25.0%	20.7%
60	41.7%	13.9%	8.3%	25.0%	11.1%
	56.9%	3.1%	3.1%	33.1%	3.8%
	41.4%	4.5%	6.2%	43.6%	4.3%

	55.4%	5.4%	8.7%	25.0%	5.4%
	42.3%	4.4%	4.8%	39.3%	9.2%
	47.1%	3.5%	6.9%	41.3%	1.2%
	47.8%	1.6%	6.5%	38.6%	5.4%
	46.9%	2.1%	7.3%	41.1%	2.6%

4. ?



1) 가 55.5%가
. , 35.5% .

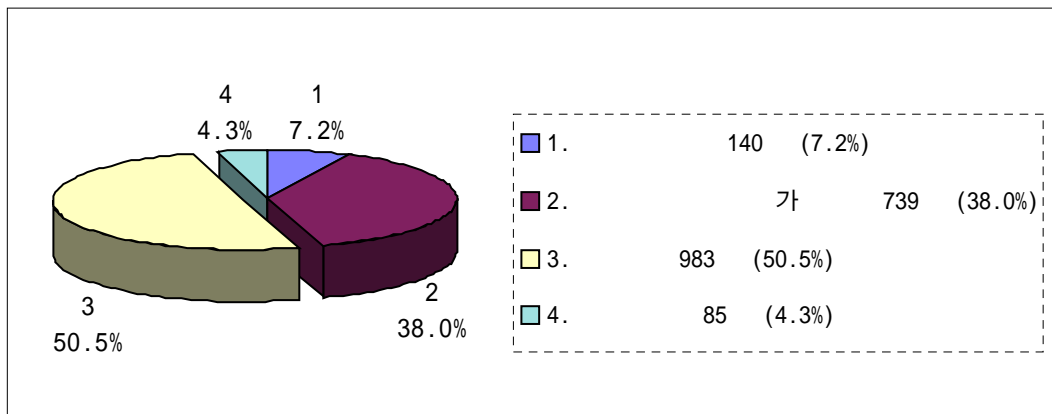
2) 10,20 50 가 30,40
60 () 가 .

12.

10	5.4%	47.3%	43.4%	3.9%	0
20	4.1%	36.1%	53.5%	5.6%	0.6%
30	3.3%	25.8%	58.6%	10.5%	1.8%
40	4.0%	20.2%	60.9%	13.7%	1.2%
50	3.2%	31.9%	57.4%	7.4%	0

60	2.9%	11.4%	65.7%	20.0%	0
	6.9%	26.9%	43.8%	18.5%	3.8%
	3.7%	29.8%	55.8%	10.2%	0.5%
	6.4%	37.2%	42.6%	12.8%	1.1%
	3.2%	27.4%	59.9%	8.3%	1.1%
	4.4%	38.9%	52.3%	3.7%	0.7%
	0.5%	21.1%	70.0%	7.4%	1.1%
	4.1%	29.1%	57.7%	8.7%	0.5%

5. $\frac{7}{50}$ 가 $\frac{100}{?}$ 이 되도록 하면 ?



1) 가 50.5%가 ' ' 가 ' 38.0% .

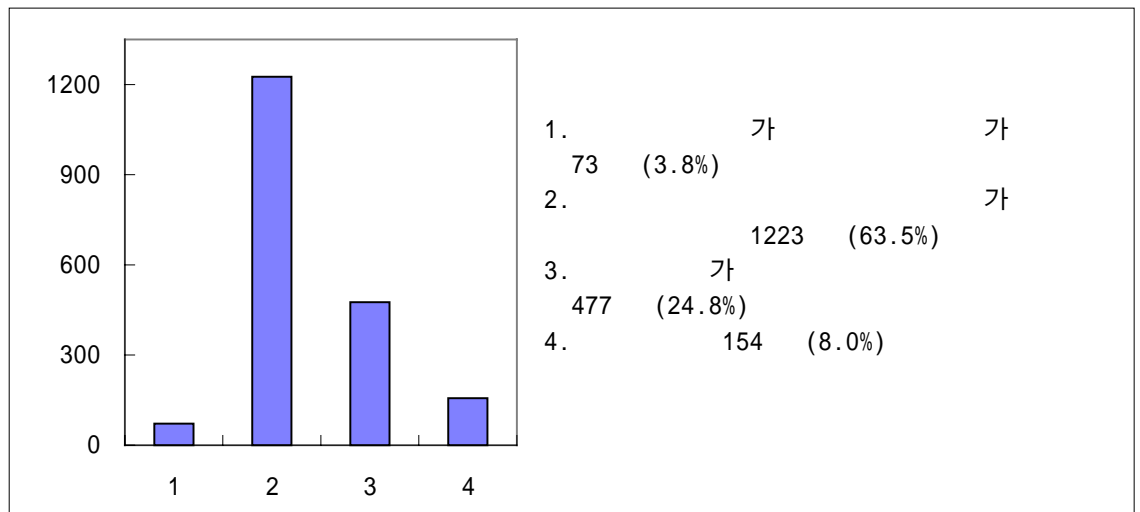
2) ' ' 57.0% 가 .

13.

		가		
--	--	---	--	--

10	7.0%	29.5%	57.4%	6.2%
20	5.2%	38.5%	52.0%	4.3%
30	9.2%	37.2%	48.9%	4.7%
40	10.5%	40.3%	45.2%	4.0%
50	6.3%	35.8%	55.8%	2.1%
60	13.9%	47.2%	36.1%	2.8%
	14.7%	33.3%	50.4%	1.6%
	7.9%	39.9%	48.5%	3.7%
	6.5%	39.8%	50.5%	3.2%
	9.7%	37.4%	48.9%	4.0%
	5.0%	33.4%	57.0%	4.6%
	7.9%	49.2%	36.1%	6.8%
	4.1%	38.6%	51.8%	5.6%

6. 92 1,800 , 93 1,400 , 94 400 , 95 100 . ?



63.5%가

가

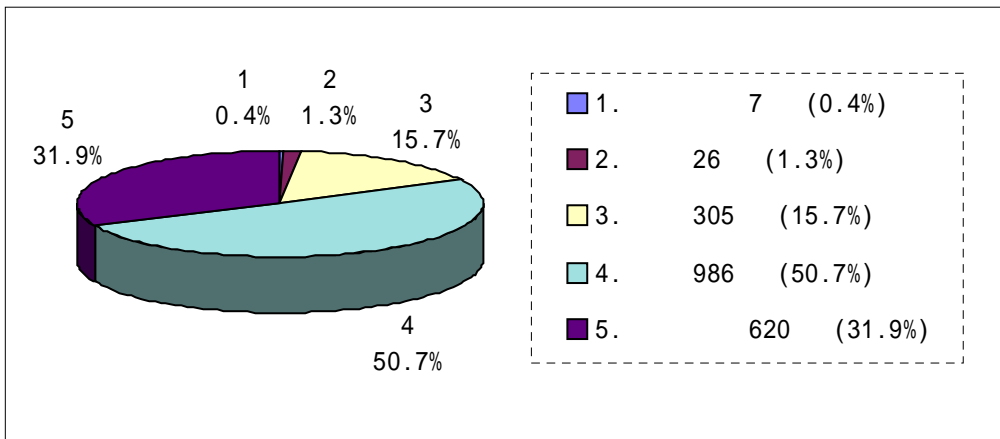
14.

	가		가	
10	2.4%	59.2%	20.0%	18.4%
20	2.9%	67.8%	21.9%	7.4%
30	5.2%	63.6%	26.0%	5.2%
40	3.3%	55.5%	28.6%	12.7%
50	7.6%	53.3%	34.8%	4.3%
60	8.3%	38.9%	47.2%	5.6%
	4.7%	72.9%	18.6%	3.9%
	3.7%	63.2%	26.7%	6.3%
	5.5%	65.9%	24.2%	4.4%
	5.1%	55.1%	32.1%	7.7%
	3.0%	67.3%	20.4%	9.4%
	3.7%	56.1%	27.3%	12.8%
	3.6%	63.3%	25.5%	7.7%

C.

1.

?

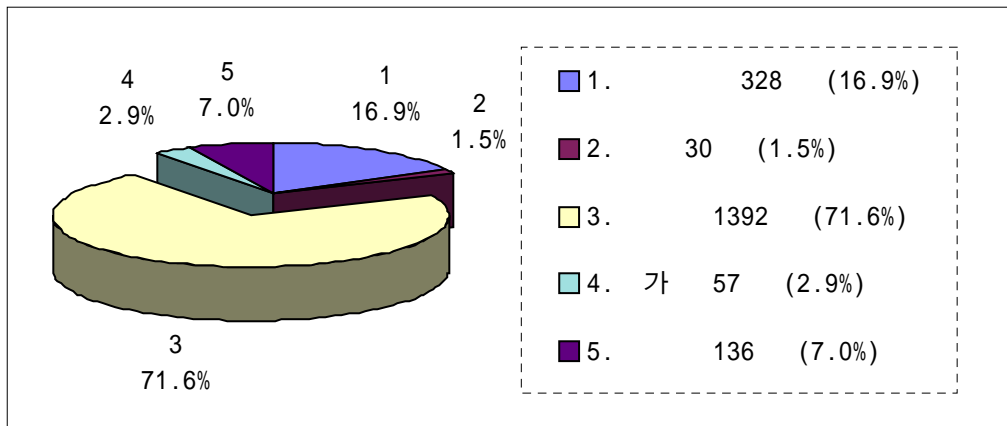


- 1) ' ' 50.7%, ' ' 31.9%
82.6%가 .
- 2) 30 88.7% 가 .
- 3) 62.1%, 87.2%
가 .

15.

10	0.8%	2.3%	22.5%	22.5%	51.9%
20	0.2%	1.4%	16.3%	16.3%	52.0%
30	0.2%	0.8%	10.3%	10.3%	49.9%
40	0.4%	0.8%	16.2%	16.2%	49.4%
50	0	4.3%	17.0%	17.0%	46.8%
60	2.8%	0	38.9%	38.9%	47.2%
	0	10.8%	27.0%	40.5%	21.6%
	0.2%	1.0%	21.3%	49.0%	28.5%
	0.4%	1.3%	11.2%	52.4%	34.8%
	1.3%	0	31.6%	43.4%	23.7%
	0.2%	1.3%	13.9%	51.7%	33.0%

2. 가 ?



1) 가
71.6%가 ' ' .

2) 가 80.6% 77.4% ' ' , ' ,
18.8% 18.3% . (10.0%)

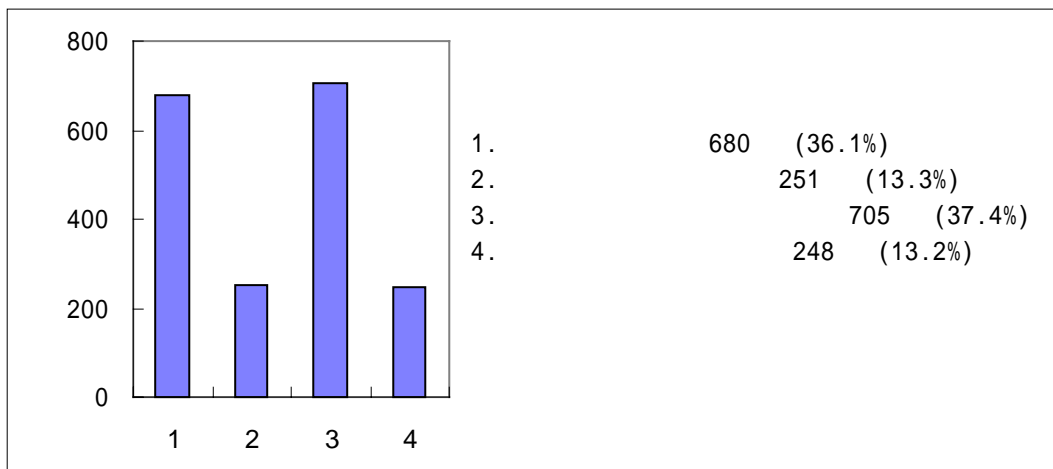
14.

				가	
10	24.0%	3.1%	48.8%	8.5%	15.5%
20	17.6%	1.7%	69.7%	3.5%	7.6%
30	14.5%	1.2%	77.1%	1.8%	5.3%
40	15.5%	1.2%	78.8%	0.8%	3.7%
50	10.5%	1.1%	80.0%	2.1%	6.3%

60	22.2%	0	69.4%	0	8.3%
	14.0%	2.3%	80.6%	0	3.1%
	15.7%	1.9%	72.9%	2.3%	7.2%
	14.0%	1.1%	77.4%	3.2%	4.3%
	13.7%	1.8%	75.9%	2.5%	6.1%
	18.8%	1.5%	65.3%	4.4%	10.0%
	18.3%	1.0%	73.8%	2.6%	4.2%
	18.5%	1.05	73.8%	2.1%	4.6%

3. 2

?



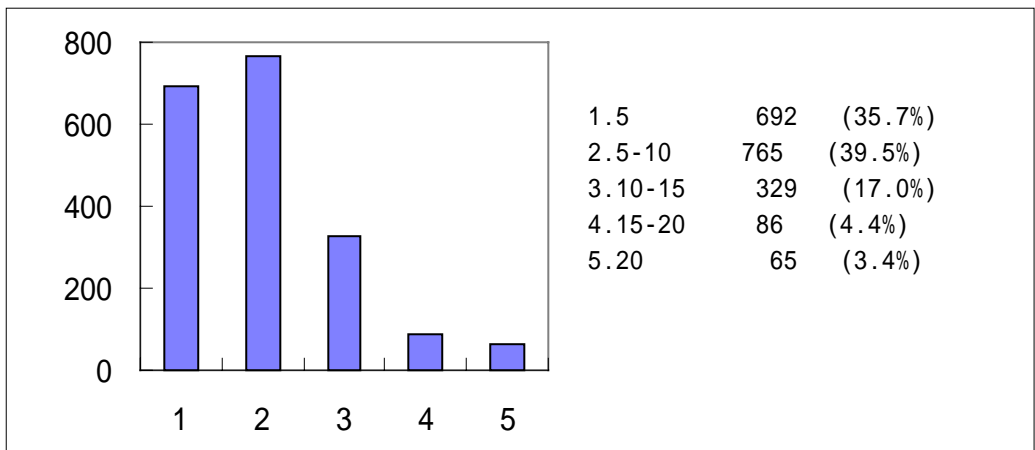
- 1) ' 36.1% , ' 37.4%, ' .
- 2) 10-40 가 ' 1 50-60
 25.0%가 ' 60
 .

15.

10	40.8%	10.8%	46.7%	1.7%
20	36.6%	15.8%	37.5%	10.1%
30	34.3%	10.1%	36.8%	18.7%
40	32.8%	11.9%	36.9%	18.4%
50	39.1%	6.5%	34.8%	19.6%
60	47.2%	25.0%	22.2%	5.6%
	38.5%	12.5%	31.4%	17.7%
	32.7%	14.4%	46.4%	6.6%

4.

?



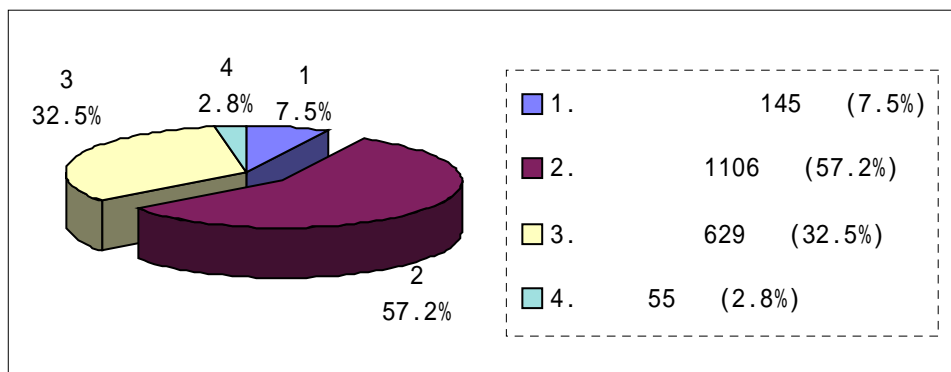
1) 35.7%가 '5', 39.5%가 '5-10', 75.2%가 10

2) 10 67.2%가 '5', 60 52.9%가 '5'

16.

	5	5-10	10-15	15-20	20
10	67.2%	21.9%	6.3%	0.8%	3.9%
20	38.6%	41.3%	14.2%	3.7%	2.1%
30	26.2%	42.0%	22.7%	5.9%	3.1%
40	30.6%	35.1%	23.3%	4.9%	6.0%
50	22.6%	43.0%	16.1%	8.6%	9.7%
60	52.9%	32.4%	8.8%	2.9%	2.9%
	32.8%	48.1%	15.3%	3.1%	0.8%
	21.3%	45.5%	23.2%	6.0%	3.9%
	31.2%	38.7%	22.6%	5.4%	2.2%
	18.6%	38.3%	23.0%	8.8%	11.3%
	51.3%	36.3%	10.0%	1.5%	1.0%
	47.1%	34.9%	13.8%	4.2%	0
	36.6%	35.1%	19.1%	5.2%	4.1%

5. 가 ?



1) 57.2%가 ' , 7.5%가
' , 64.7%가

2) 10-50 60% 60
60%가 ' ' .

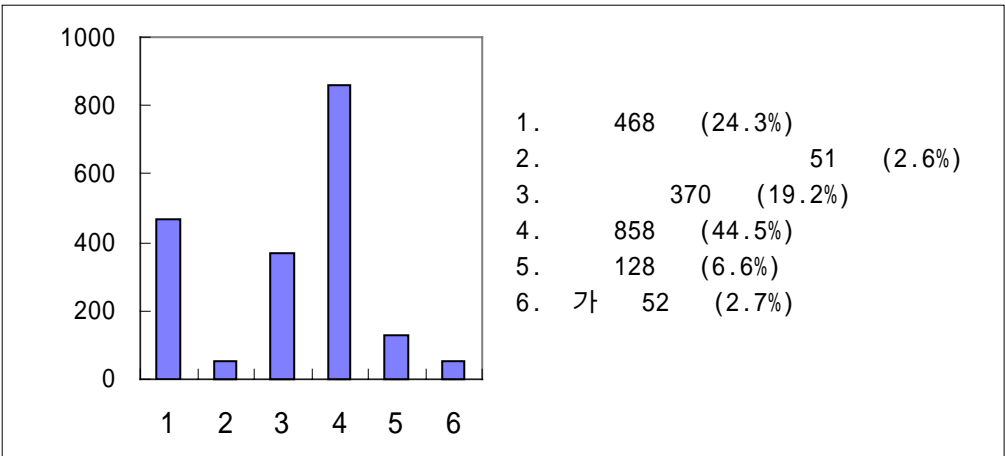
3) 가 . (' ')
59.2%, ' ' 7.2%)

17.

10	8.6%	53.1%	33.6%	4.7%
20	7.0%	59.7%	31.0%	2.3%
30	7.0%	59.6%	30.3%	3.1%
40	8.4%	51.4%	36.5%	3.6%
50	10.8%	51.6%	36.6%	1.1%
60	8.6%	25.7%	60.0%	5.7%
	10.9%	58.9%	24.8%	5.4%
	7.1%	61.5%	27.6%	3.7%
	9.6%	68.1%	20.2%	2.1%
	8.4%	53.1%	36.7%	1.8%
	7.2%	59.2%	31.4%	2.3%
	3.2%	46.3%	46.3%	4.3%
	9.2%	51.5%	37.8%	1.5%

6.

?



- 1) 44.5%가
- 2) 2 3
50.6%, 48.2% 1,4

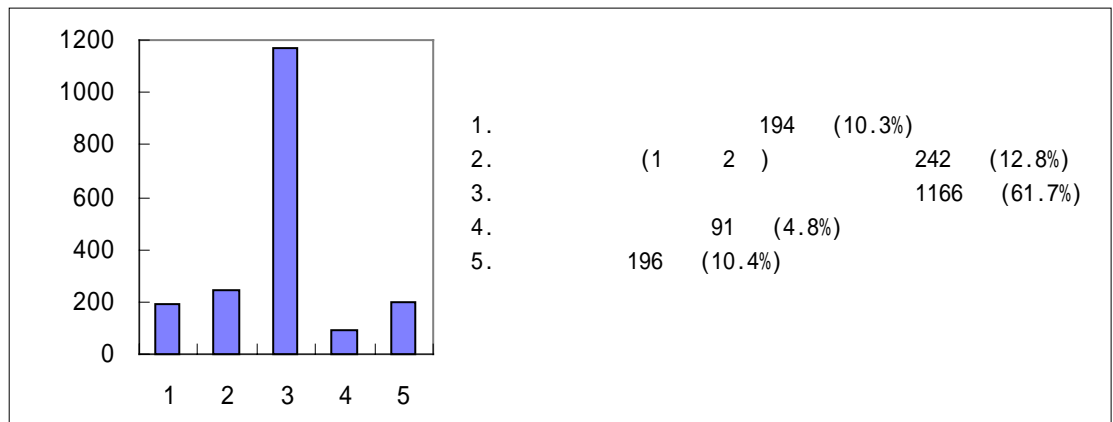
18.

						가
1	24.8%	4.0%	19.3%	43.2%	7.2%	1.4%
2	22.4%	1.7%	16.9%	50.8%	5.8%	2.4%
3	23.2%	2.4%	14.6%	48.2%	7.4%	4.2%
4	27.1%	2.8%	25.6%	34.5%	7.0%	3.0%
	13.4%	6.3%	27.6%	45.7%	5.5%	1.6%
	21.8%	1.4%	20.1%	44.4%	8.6%	3.7%
	24.7%	8.6%	22.6%	41.9%	2.2%	0
	23.1%	3.2%	17.0%	36.8%	13.7%	6.1%
	28.8%	2.8%	15.7%	49.6%	2.6%	0.5%
	21.8%	1.1%	28.2%	37.8%	6.9%	4.3%
	26.0%	0.5%	16.3%	46.4%	7.7%	3.1%

60	2.8%	33.3%	38.9%	19.4%	5.6%
	0.8%	15.7%	71.7%	11.0%	0.8%
	3.5%	21.3%	48.0%	23.2%	4.0%
	4.3%	12.9%	55.9%	21.5%	5.4%
	6.2%	25.9%	44.9%	19.7%	3.3%
	3.8%	20.1%	36.8%	28.0%	11.3%
	3.2%	22.6%	27.4%	36.%	10.8%
	5.7%	20.1%	40.7%	27.3%	6.2%

8. () (1 4), 2 (5 8),
(,) .

?



'가 61.7% 가
, '1,2' 12.8%
74.5% .

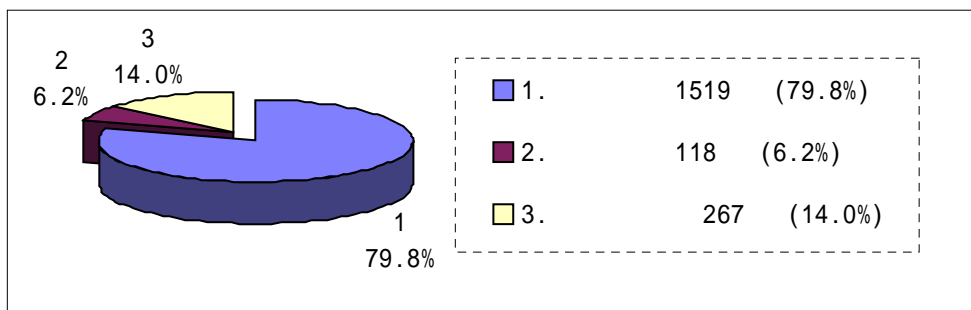
20.

		(1,2)			

10	14.3%	14.3%	45.2%	4.0%	22.2%
20	11.7%	12.2%	60.6%	4.2%	11.3%
30	7.4%	14.7%	66.3%	4.6%	6.9%
40	7.5%	12.9%	61.8%	8.3%	9.5%
50	9.8%	9.8%	70.7%	4.3%	5.4%
60	20.0%	5.7%	62.9%	2.9%	8.6%
	10.1%	14.5%	63.1%	5.6%	6.7%
	10.5%	10.3%	59.6%	3.7%	15.9%
	11.7%	21.9%	59.4%	3.9%	3.1%
	11.2%	15.0%	63.5%	4.3%	6.0%
	6.5%	17.4%	65.2%	4.3%	6.5%
	9.6%	12.6%	64.4%	7.4%	5.9%
	11.8%	11.0%	58.0%	4.3%	14.8%
	8.8%	9.9%	61.5%	2.2%	17.6%
	6.8%	8.9%	65.4%	6.8%	12.0%

9. 가

?



1) 가

79.8%가 ' ' .

가

2) 20 가 83.5%, 60 60.0%

.

3) 88.5%, 83.9%

.

21.

10	74.4%	4.7%	20.9%
20	83.5%	3.4%	13.0%
30	82.0%	6.5%	11.5%
40	72.5%	10.4%	17.1%
50	64.1%	19.6%	16.3%
60	60.0%	17.1%	22.9%
	88.5%	6.9%	4.6%
	83.9%	5.9%	10.2%
	72.5%	12.1%	15.4%
	74.9%	10.7%	14.4%
	80.1%	4.3%	15.6%
	72.8%	4.9%	22.3%
	81.1%	4.6%	14.3%